

**HOUSE AND LAND PRICE \$712,900.00**

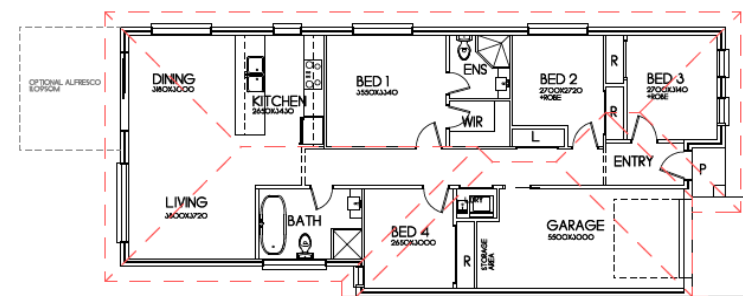
\*LAND \$4 ,000.00 HOUSE \$259,900

 4  2  1



## HOME FEATURES DESIGNER LIVING HOMES ESSENTIALS PACKAGE INCLUSIONS

- 2600mm ceilings to ground floor
- LED light fittings
- Mirrored Sliding robes
- Selection of floor tiles to nominated areas
- Selection of floor carpet to nominated areas
- 600mm FRANKE European appliances
- 600mm FRANKE European dishwasher
- Selection of stone benchtops to kitchen
- Glass splashback to kitchen
- Concrete Driveway (to suit garage configuration)
- And much more



**FREE TILED ALFRESCO OPTION**

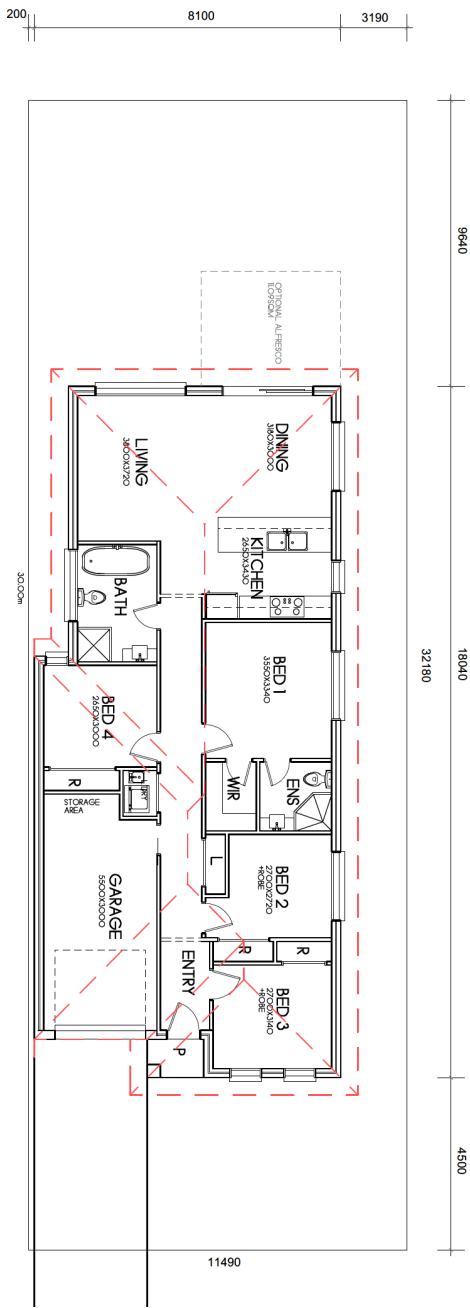


TERMS & CONDITIONS: Package prices are based on standard home, standard facade and builder's preferred siting. Depicted facade may incur an additional charge. Pricing may vary due to actual land availability. House and Land Packages are subject to developers design review panel, council final approval and Designer Living Homes Procedure of Purchase. All prices are GST inclusive. Designer Living Homes reserves the right to change prices without notice. Start date is subject to client, developer and council meeting time frames including but not limited to, land registration, amount of client variations, developer/council approval, acceptance of tender and contract within 7 days respectively. Prices are subject to developer, council and statutory requirements, location and condition of services. Package provided is based on Designer Living Homes preliminary/preferred siting and preliminary developer land information currently available. Variations to land size, location of services - including but not limited to sewer/stormwater locations, drainage grates, Telstra pits, trees, butterfly drains, driveway crossover, pram ramps, electrical/other easements or Section 88B instrument, may necessitate floor plan or siting amendments. Designer Living Homes Sale terms and conditions apply a full details of these are available from all Designer Living Homes Display Centres. Please speak to your Designer Living Homes consultant or refer to individual marketing material. Builders Licence Number 304148C. Effective October 2018.

HOUSE AND LAND PRICE \$712, 00.00

\*Land \$4 ,000.00 House 259, 00.00

4 2 1 m<sup>2</sup>



FLOOR AREAS	
LIVING	115.25m
GARAGE	20.05m
PORCH	1.50m
TOTAL	136.80m



TERMS & CONDITIONS: Package prices are based on standard home, standard facade and builder's preferred siting. Depicted facade may incur an additional charge. Pricing may vary due to actual land availability. House and Land Packages are subject to developers design review panel, council final approval and Designer Living Homes Procedure of Purchase. All prices are GST inclusive. Designer Living Homes reserves the right to change prices without notice. Start date is subject to client, developer and council meeting time frames including but not limited to, land registration, amount of client variations, developer/council approval, acceptance of tender and contract within 7 days respectively. Prices are subject to developer, council and statutory requirements, location and condition of services. Package provided is based on Designer Living Homes preliminary/preferred siting and preliminary developer land information currently available. Variations to land size, location of services - including but not limited to sewer/stormwater locations, drainage grates, Telstra pits, trees, butterfly drains, driveway crossover, pram ramps, electrical/other easements or Section 88B instrument, may necessitate floor plan or siting amendments. Designer Living Homes Sale terms and conditions apply a full details of these are available from all Designer Living Homes Display Centres. Please speak to your Designer Living Homes consultant or refer to individual marketing material. Builders Licence Number 304148C. Effective October 2018